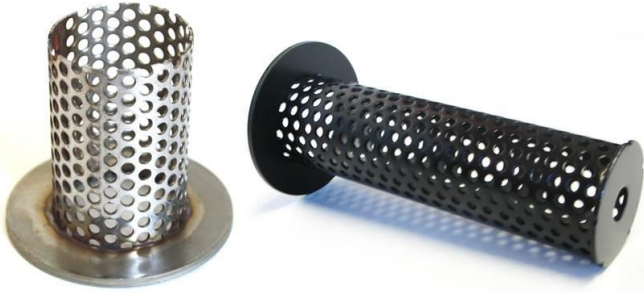




## Installation Instruction Sheet

41-E0053 - Vortex Insert

41-E0054 - Vortex 2 Insert



### Tool(s) Needed

- 1/4" Allen wrench
- or
- 10/32" Allen wrench

1. Remove the 3 or 4 Allen screws that hold the end cap on to the base plate.
2. Install the spark arrestor spacer ring into the recessed area of the base plate.  
***NOTE:** The spacer ring was included with the spark arrestor that came with your exhaust.*
3. Slide the Vortex insert into the muffler, over the spacer ring.  
***NOTE:** If you are using an insert in conjunction with a spark arrestor, do not use the spacer ring. Install the insert first, then install the spark arrestor (dome facing out) second.*
4. Re-install the end cap using Loctite on all screws. (*Red Loctite is recommended.*) Let it dry before using exhaust.

**NOTE: Vortex 2 is not compatible with all models. See [www.biggunexhaust.com](http://www.biggunexhaust.com) for more information.**

